

Investor Conferences

1Q 2021

Sitronix Technology Corp.

矽創電子股份有限公司

8016: TT

Sitronix

公司簡介

公司名稱	矽創電子股份有限公司
成立日期	1998年7月
資本額	40M USD
董事長暨執行長	毛穎文 Vincent Mao
臺灣證券交易所上市	2003年12月 (8016)



Consolidated

矽創電子

Sitronix

Display Driver IC



Incubator since 2009

產品組合

Mobile Displays

Industrial & Automotive Displays

Sensors

SoC

Mobile Display Driver IC
手機顯示器

Automotive Display Driver IC
車載顯示器

Industrial Display Driver IC
工控顯示器

System on Chip (SoC) products
其他非顯示器 IC



Subsidiaries



Sitronix

Subsidiaries



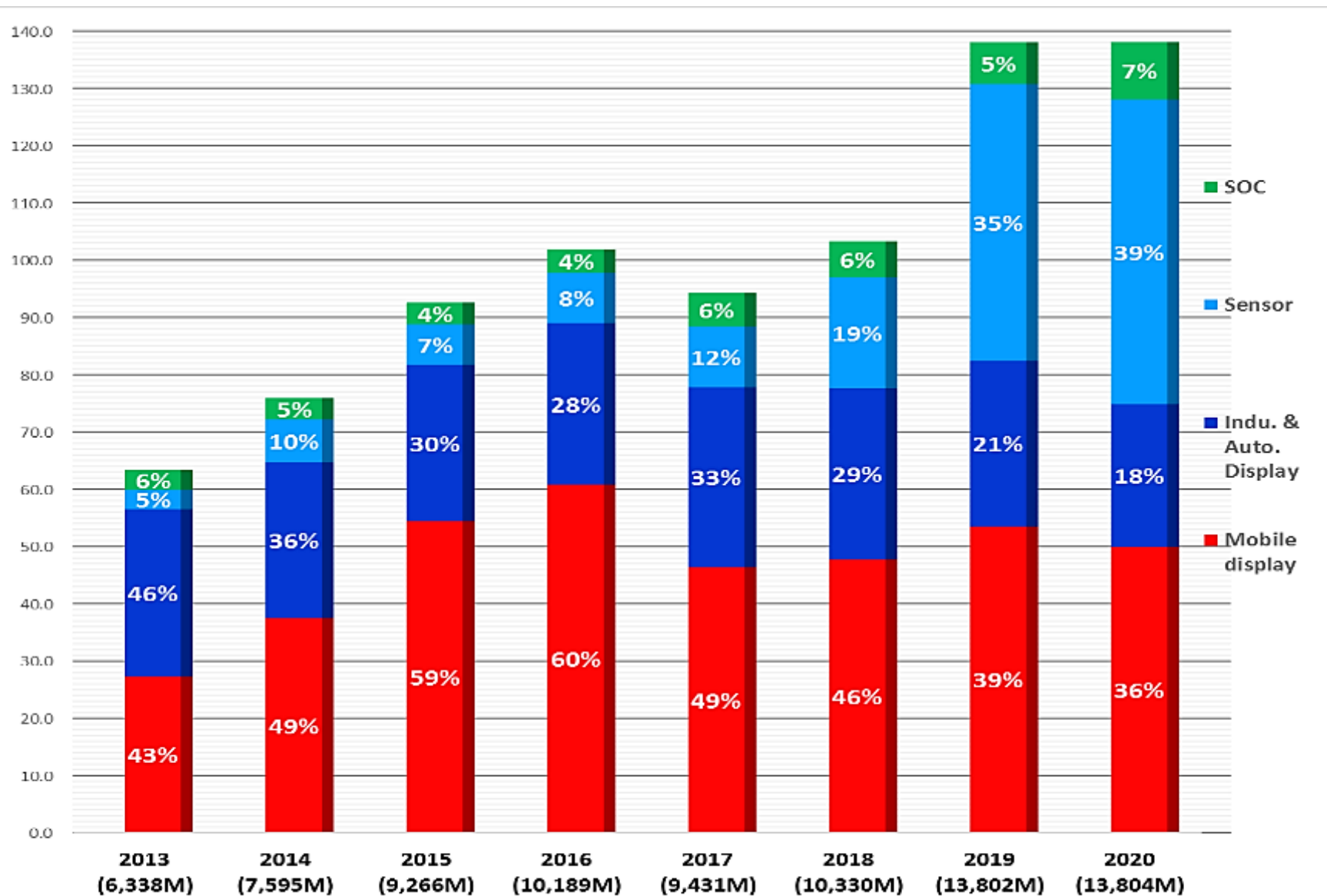
Differentiation

Sitronix Confidential. Do Not Copy or Distribute.

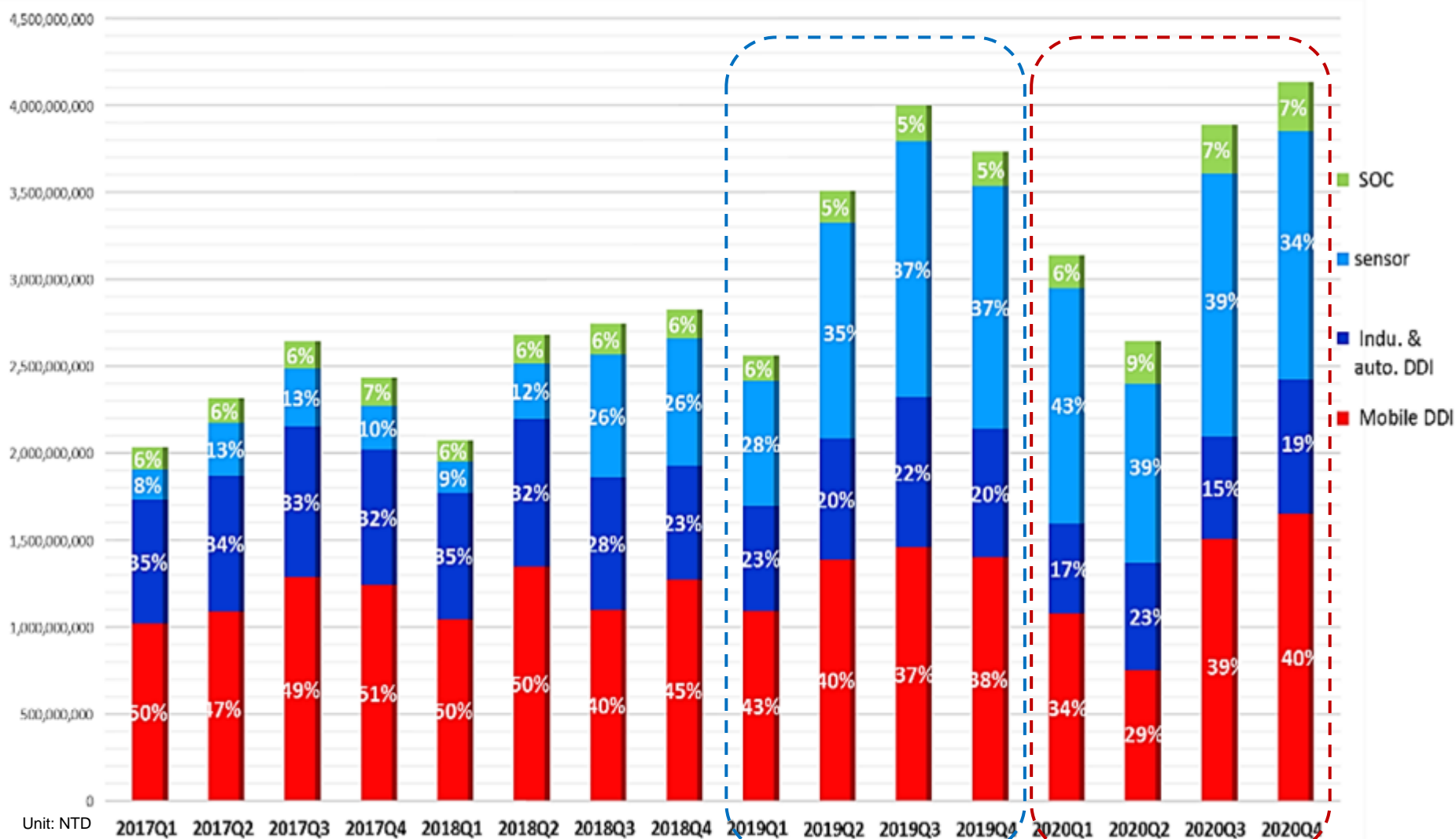
Diversification

Incubator

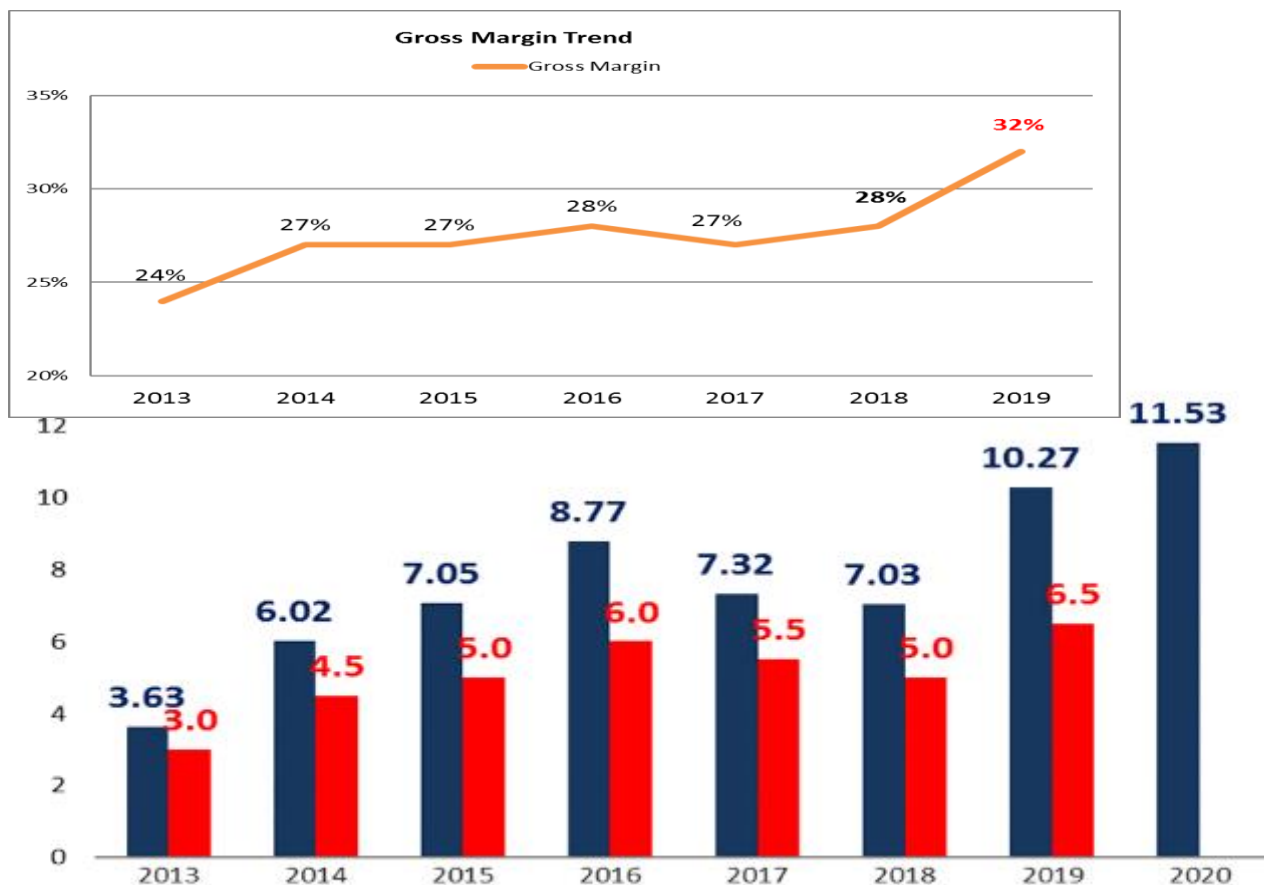
合併營收_依產品別



季度合併營收_依產品別



毛利率, EPS, 配息資訊



Year	Q1		Q2		Q3		Q4		Annual		
	EPS	GM	EPS	GM	EPS	GM	EPS	GM	EPS	GM	Cash dividend
2020	2.43	32%	2.43	35%	2.63	32%	4.05		11.53		
2019	1.70	33%	2.80	33%	3.22	32%	2.55	30%	10.27	32%	6.5
2018	1.10	24%	1.82	24%	2.37	33%	1.74	30%	7.03	28%	5.0

手機顯示器驅動 ICs

Small-sized DDIC - zeroCap

2018: ~ 500M pcs
 2019: ~ 400M pcs
 2020: ~ 300M pcs



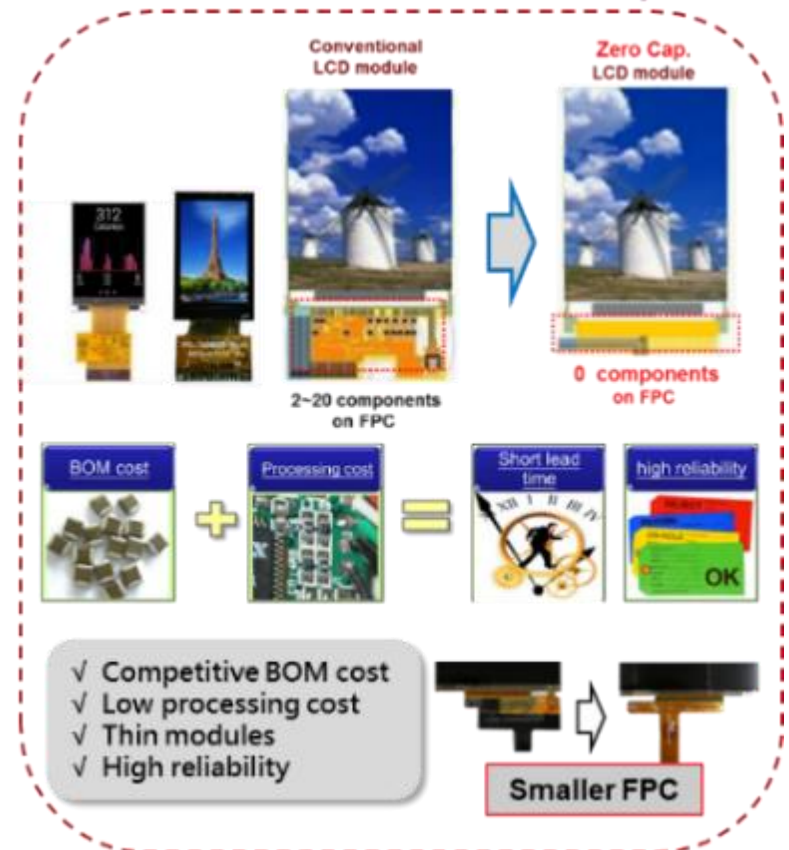
Smartphone DDIC - zeroCap

2018: > 130M pcs
 2019: > 250M pcs
 2020: > 320M pcs



Differentiation

Sitronix's Patents



車載顯示器驅動 ICs

Diversification

< 6 inch displays

7 - 9 inch displays

Instrument Cluster Display

Analog



No Display

Hybrid (Analog + Digital)



Meters

Full Digital



Virtual
Cockpit



Automobile Monitors



Multi-Function CSD



Display Audio



Climate Control



Twin CSDs
Display Audio
+
Navigation



Rearview Mirror Display



Overhead Monitor



Dual Headrest

Segment TN

Character TN

Graphic STN

Mono TFT

Color TFT



光學感測晶片 Optical Sensors

PS + ALS shipment

2018 : >340M pcs
2019 : >600M pcs
2020 : >720M pcs

Proximity Sensors (PS)

近接感測晶片 → 關屏防誤觸
turns off the display (anti-touch)

Ambient Light Sensors (ALS)

環境光感測晶片 → 調節螢幕亮度
screen brightness control

G1: PS + ALS 2-in-1 visible solution (2010)

G2: PS + ALS 2-in-1 invisible solution (2018)

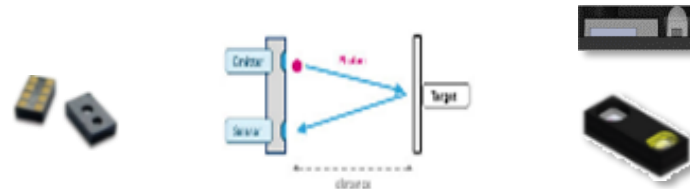
- Under-display 屏下方案 for AMOLED displays
- Slit type 狹縫方案 for TFT displays

Color temperature Sensors (RGB)

色溫感測晶片 → 調節螢幕色溫
screen color temperature control

G3: PS + RGB sensors (2019)

- for better reading experience



Waterdrop Screen

- 狹縫(Slit) ALS/PS
- 狹縫(Slit) PS / 屏下 ALS
- 前攝旁 ALS/PS
(Aside of Front Facing Camera)



Bezel-less Screen

- 屏下(Under-display) ALS/PS
- 狹縫(Slit) PS / 屏下 Under-display ALS



感測器之感度演進 → 單價(ASP)促升

G1: PS + ALS visible solution 1x

G2: PS + ALS invisible solution → sensitivity 3x → 6x → 10x
- Under-display solution for AMOLED

G3: PS + RGB visible solution

G4: PS + RGB invisible solution

水滴屏 (Teardrop-shaped)



全景屏(Full screen)



瀏海屏(Notch type)



開孔屏(Apature type)



16:9 → 18:9 → 19:9 ...

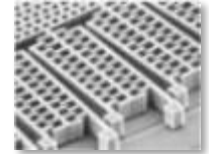
Upgrading because of increases in...

1. Display resolution
2. PPI density
(resulting in a decrease in light transmittance)
3. AMOLED penetration rate

微機電感測晶片 MEMS sensors

G-sensor shipment

2018 : >30M pcs
2019 : >55M pcs
2020 : >80M pcs



Accelerometers (G-sensors)

→ Rotation detection

加速度感測器 → 屏幕旋轉偵測

✓ G-sensors for smartphones

✓ Low-power G-sensors for wearable & IoT devices



穿戴式裝置：光學感測器 + MEMS

True wireless stereo (TWS) earbuds

Accelerometers → click detection 敲擊偵測

Proximity sensors → on/off switch 功能啟用開關



敲擊偵測 Click detection

- 有來電時 Incoming call
單擊接聽 Click to answer
雙擊拒接 Double click to reject
- 音樂播放 Music mode
單擊暫停 Click to pause
雙擊換曲 Double click to switch

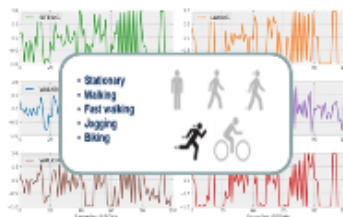
Smart watches & fitness trackers

Accelerometers → motion detection 移動偵測

Optical sensors → heartbeat detection 心律偵測 & UV sensors 紫外線感測



運動偵測 / 計步 Motion detection



抬手亮屏 / 動態心率輔助 Heartbeat detection



睡眠偵測 / 久坐提醒 Sleep quality monitoring



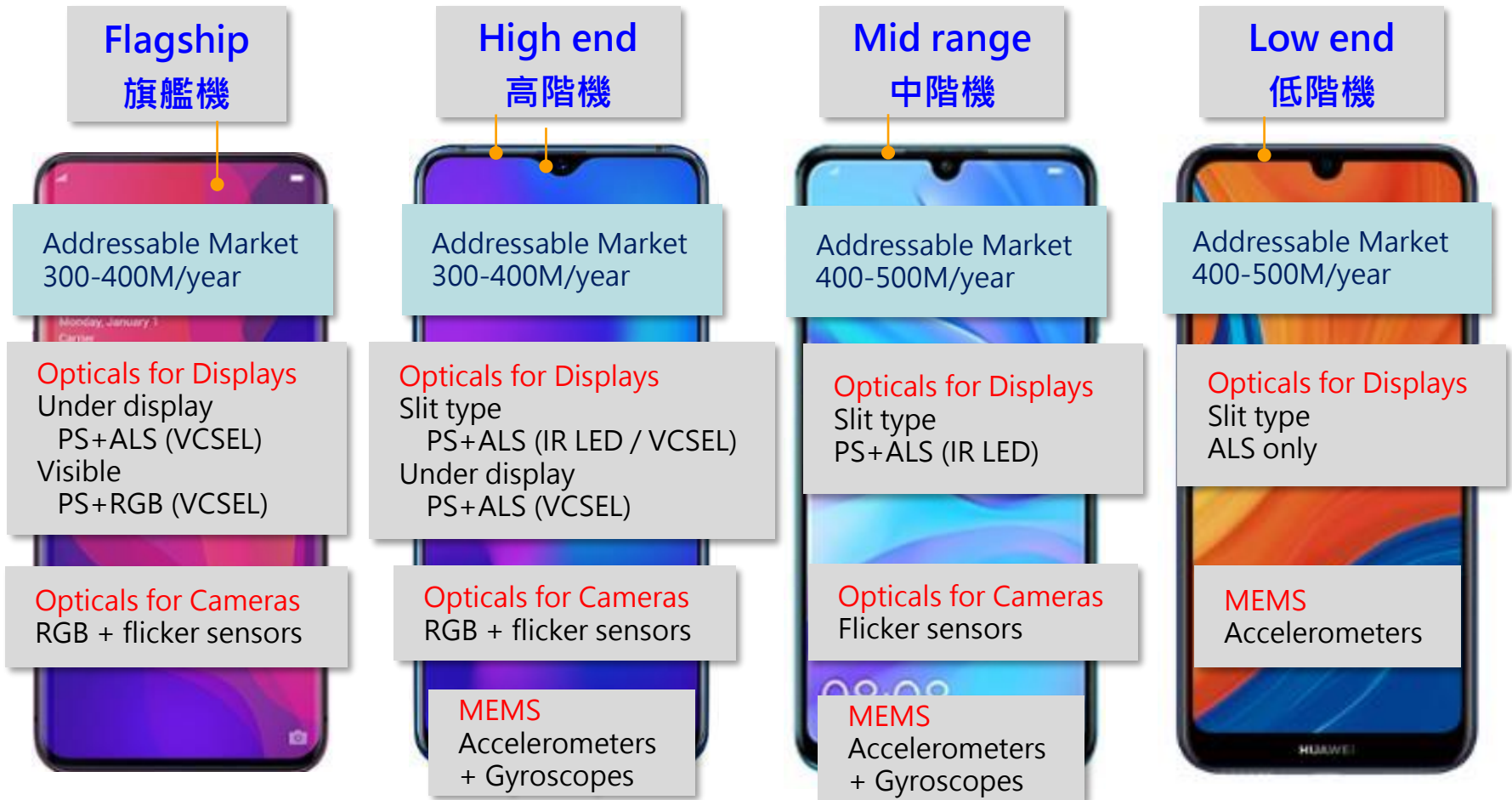
感測器：展望未來

1. Optical sensors for smartphone screens 前螢幕應用
 - PS + ALS visible solution 調整顯示亮度
 - High-sensitivity PS + ALS invisible solution → 3x → 6x → 10x sensitivity
 - PS + RGB visible solution 調整顯示色溫 → invisible solution (coming soon!)
2. Optical sensors for smartphone cameras 後相機應用 white balance correction 白平衡校正
 - 3-channel RGB sensors → 6-channel for better color detection (coming soon!)
 - Flicker sensors 閃頻偵測
3. MEMS: Gyroscope 加速MEMS陀螺儀感測器開發
 - Accelerometers + Gyroscopes (2 in 1) for high-end smartphones (coming soon!)
4. Other applications 其他非手機之應用
 - TWS: proximity sensors & accelerometers
 - Smart watches: ambient light + UV, heartbeat sensors, accelerometers
 - Smart speakers: ambient light sensors
 - ...and more (e.g. auto & industrial)

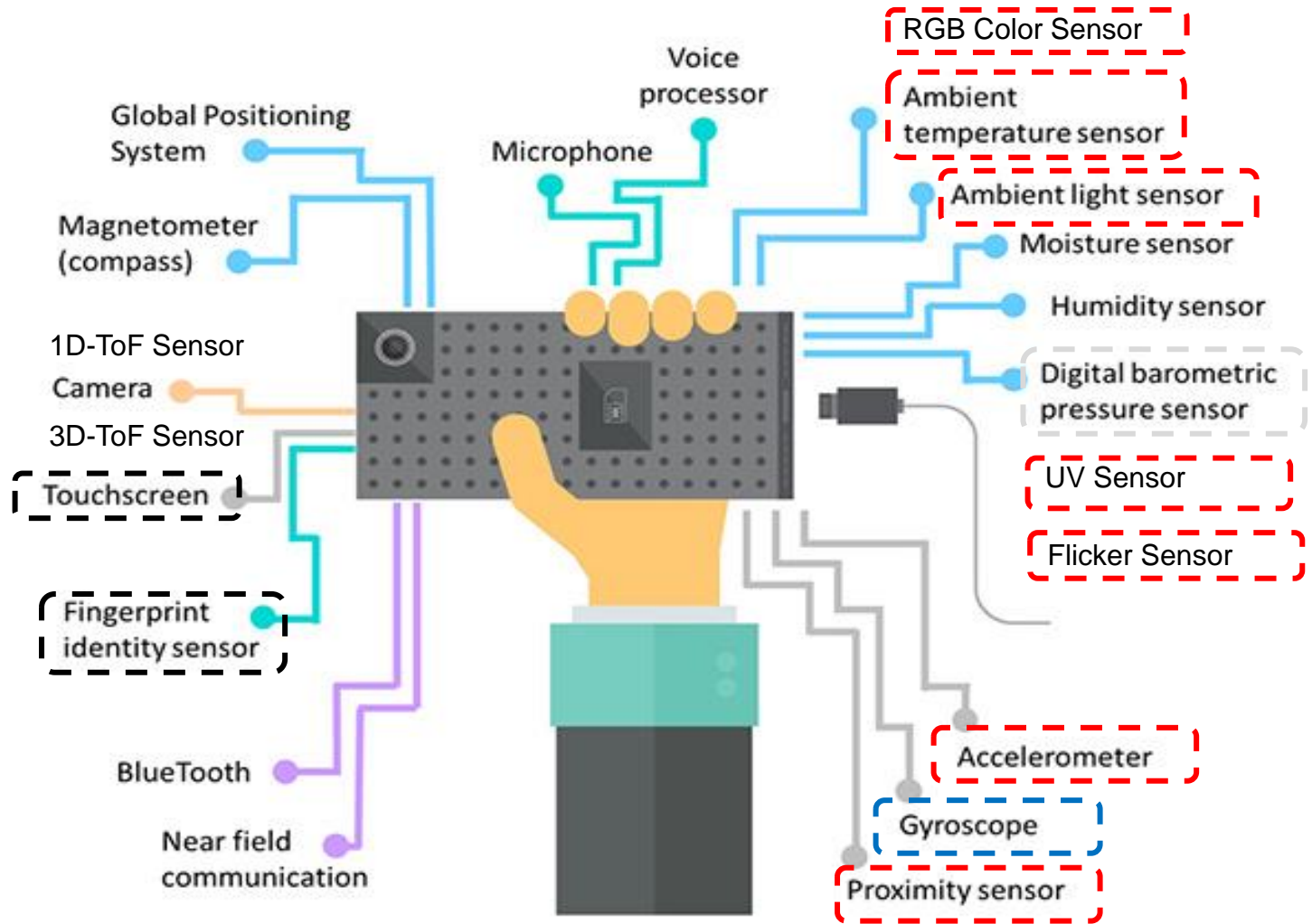
2020年以前



展望未來



敬請期待



產品策略

多樣化 (Diversification)

提供完整產品綫, 一站式採購服務
One-stop shopping

分散應用, 分散市場, 降低風險
Risk reduction

高成長+高毛利之產品組合
Balance GM & sales growth

差異化 (Differentiation)

持續創造俱市場競爭力產品
Make existing products better

持續擴展市場滲透率
Market share gains

持續孵化新產品
Incubated new products



Consolidated



Incubator since 2009

We'd love to hear from you!

Strategic Marketing Director

Jacky Chou 周德雲

Tel: +886-2-2659 1276 ext 2206

E-mail: jacky_chou@sitronix.com.tw

Investor Relations Officer

Vivian Mao 毛廷方

Tel: +886-2-2659 1276 ext 2395

E-mail: vivian_mao@sitronix.com.tw

Website: <http://www.sitronix.com.tw>

Taipei office:

6F., No. 608, Ruiguang Rd., Neihu Dist., Taipei City 114, Taiwan

台北市內湖區瑞光路608號6樓

Lighting up your life.

Sitronix

合併損益表

Item	Q3 2020		Q2 2020		Q1 2020		Q1-Q4 2019		Q3 2019	
	Results	% of sales	Results	% of sales	Results	% of sales	Results	% of sales	Results	% of sales
Net Sales	3,887,941	-	2,644,857	-	3,138,847	-	13,802,738	-	4,000,478	-
Gross Profit	1,253,220	32%	925,366	35%	1,011,677	32%	4,385,345	32%	1,280,271	32%
Operating Expense	628,945	16%	525,562	20%	569,936	18%	2,308,582	17%	630,271	16%
Net other income (expenses)	265	0%	662	0%	91,354	3%	9,663	0%	9,662	0%
Operating Income	624,540	16%	400,466	15%	533,095	17%	2,086,426	15%	659,662	16%
Income before Tax	628,840	16%	497,065	19%	549,896	17%	2,203,422	16%	693,490	17%
Net Income*	315,601	8%	291,899	11%	291,416	9%	1,230,588	9%	386,629	10%
EPS	2.63	-	2.43	-	2.43	-	10.27	-	3.22	-

Unit: NT\$ thousands (except EPS)
Accounting standard: IFRS

* Listed on the English translation of our financial statements as "Profit (loss), attributable to owners of parent"

合併資產負債表

Item	2020/9/30	2020/6/30	2020/3/31	2019/12/31	2019/9/30
Total Assets	12,691,112	13,313,165	11,315,424	10,760,904	10,013,046
Current Assets	10,741,502	11,320,483	9,386,607	8,626,168	7,945,341
Cash & Equivalents	3,751,335	4,123,024	3,356,031	2,932,647	2,944,608
AR	1,239,710	1,103,291	1,248,372	1,398,832	1,427,273
Inventory	1,818,842	2,495,793	2,387,205	1,909,664	1,731,420
Total Liability	3,886,615	5,046,401	5,630,077	4,155,212	4,003,106
AP	1,616,864	1,411,218	2,065,666	2,085,145	2,064,045
Shareholder Eq.	8,804,497	8,266,764	5,685,347	6,605,692	6,009,940

Unit: NT\$ thousands
Accounting standard: IFRS