

# Investor Conferences

## 3Q 2019

Sitronix Technology Corp.  
矽創電子股份有限公司  
8016 : TT



***Sitronix***

# About Sitronix

Company Name	Sitronix Technology Corp.
Established	July 9, 1998
Capitalization	USD 40 million
Chairman and CEO	Vincent Mao
Employees	Parent: 402    Group: 763
Headquarters	Hsinchu, Taiwan
Sales Offices	Taipei, Shenzhen, Shanghai , HeFei
IPO Listing	December 25, 2003



Display Driver IC



MCU/DSP (91%)



Touch controller (84%)  
Fingerprint IC



Power Management IC (64%)



Sensor IC (50.4%)



# Product Portfolio

## Mobile Displays

Mobile Display Driver IC  
(手機顯示器)

## Industrial & Automotive Displays

Automotive Display Driver IC  
(車載顯示器)

Industrial Display Driver IC  
(工控顯示器)

## Sensor & SoC

System on Chip (SoC) products  
(其他非顯示器 IC)



### Subsidiaries

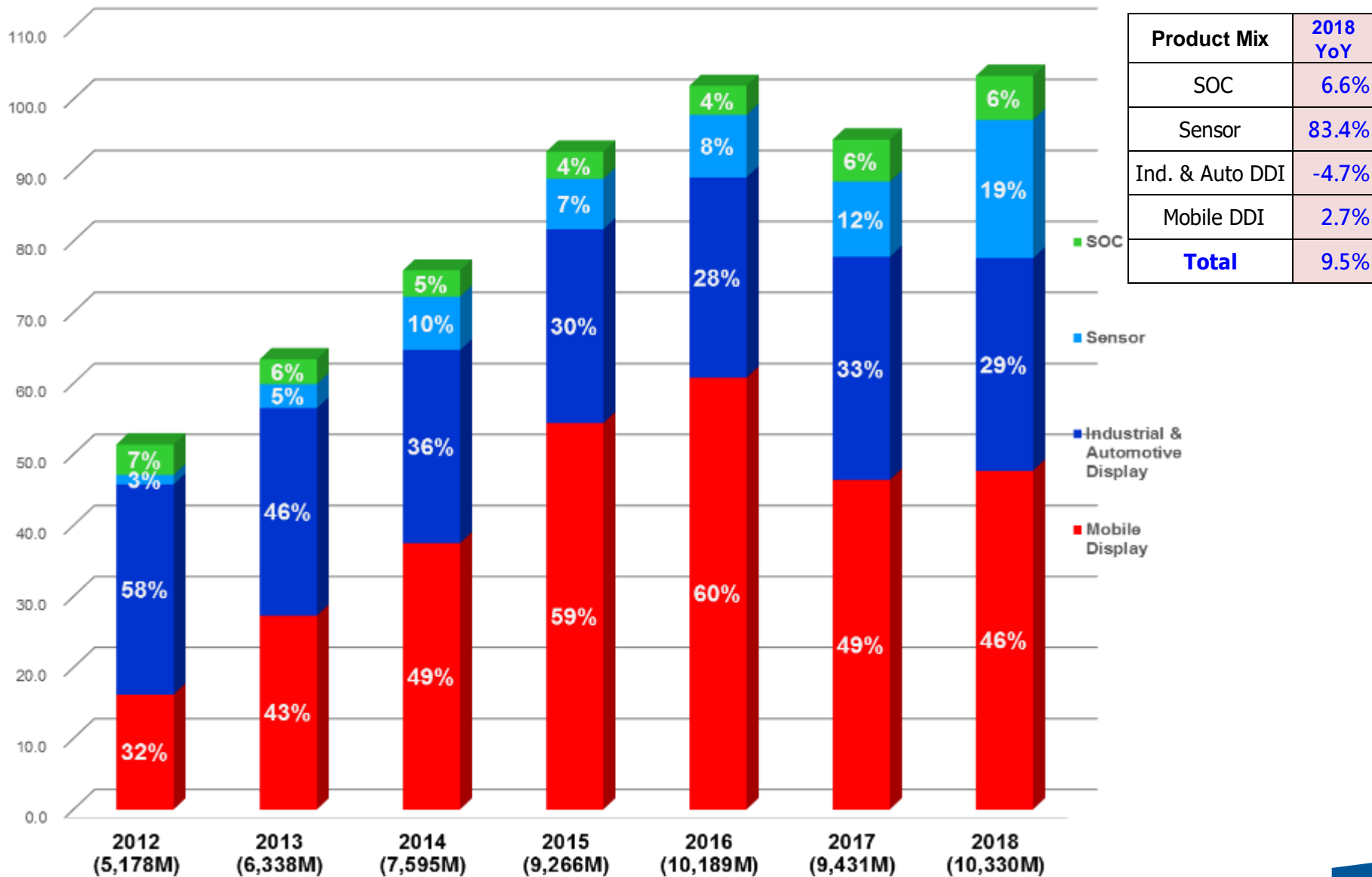


# Sitronix

### Subsidiaries

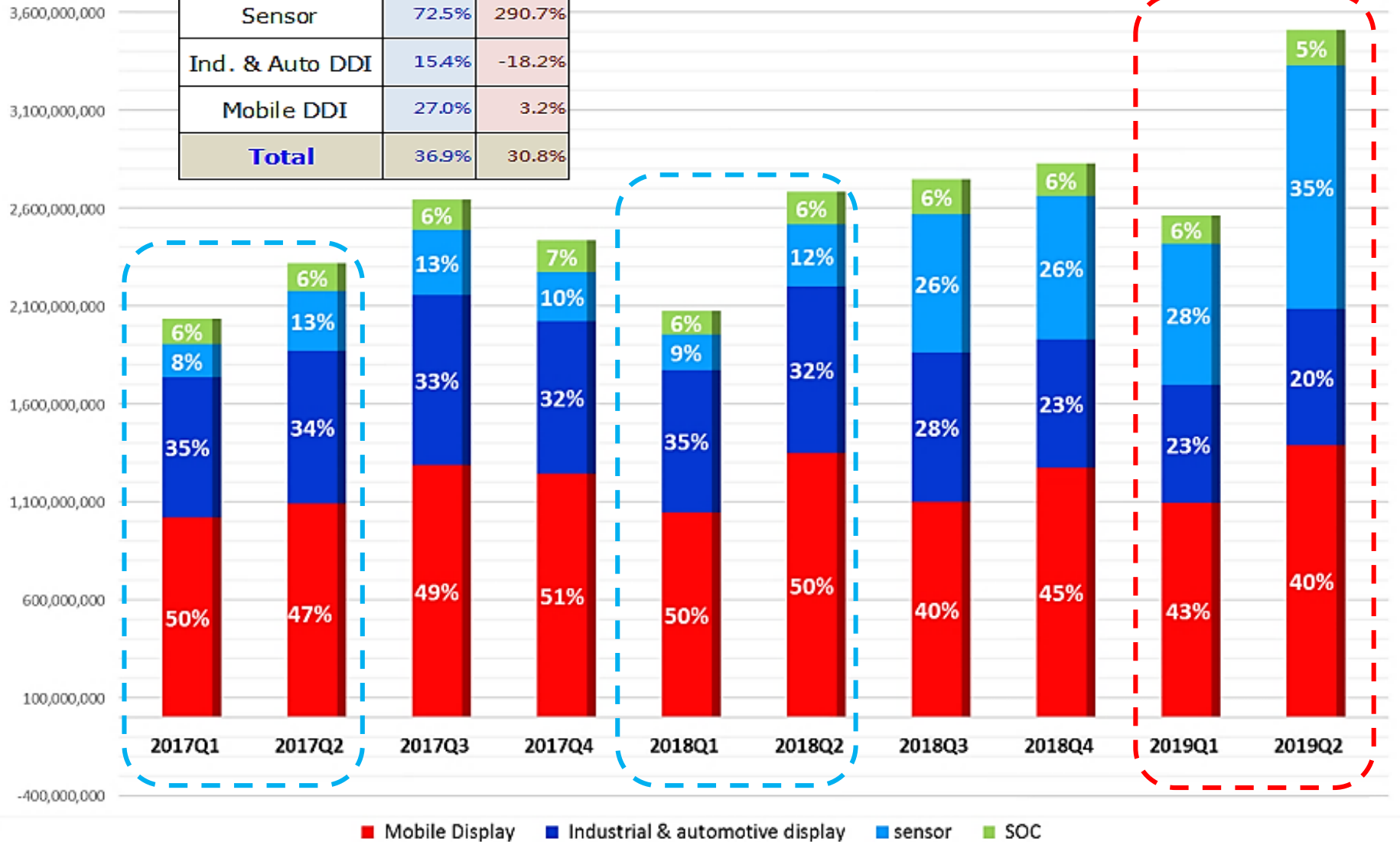
- mCore (91%)
- INFST (64%)
- HFST (84%)
- sensortek (50.4%)

# Product Mix (2012-2018)



# Product Mix & Q2 Results

Product Mix	19Q2 QoQ	19Q2 YoY
SOC	24.6%	8.9%
Sensor	72.5%	290.7%
Ind. & Auto DDI	15.4%	-18.2%
Mobile DDI	27.0%	3.2%
<b>Total</b>	<b>36.9%</b>	<b>30.8%</b>





# Monthly Revenue 2017 - 2019

(K) ntd	2017	YoY_M	Quarterly amount	YoY_Q	2018	YoY_M	Quarterly amount	YoY_Q	2019	YoY_M	Quarterly amount	YoY_Q
1	600,199	-32.0%	2,034,300	-11.3%	781,237	30.2%	2,074,724	2.0%	920,272	17.8%	2,561,593	23.5%
2	622,643	12.9%			462,190	-25.8%			657,782	42.3%		
3	811,458	-5.7%			831,297	2.4%			983,539	18.3%		
4	750,792	-9.6%	2,318,317	-3.3%	860,299	14.6%	2,682,651	15.7%	1,104,244	28.4%	3,507,731	30.8%
5	710,736	-10.2%			901,245	26.8%			1,200,808	33.2%		
6	856,789	10.4%			921,107	7.5%			1,202,679	30.6%		
7	881,044	8.6%	2,643,141	-8.1%	922,769	4.7%	2,746,000	3.9%	1,275,772	38.3%		
8	891,613	-9.2%			901,386	1.1%						
9	870,484	-19.6%			921,845	5.9%						
10	781,637	-20.4%	2,435,304	-7.2%	940,776	20.4%		16.1%				
11	813,378	-8.7%			971,631	19.5%						
12	840,289	11.9%			914,723	8.9%						
Total	9,431,062	-7.4%		-7.45%	10,330,505	9.5%			7,345,096			
1H	1 - 6				4,757,375				6,069,324	27.6%		
	1 - 7				5,680,144				7,345,096	29.3%		

Unit: NT\$ thousands  
Accounting standard: IFRS

# Mobile Display Driver ICs

## Small-sized DDIC ... w/ Zero Cap

2018: > 490M pcs



## 4G Kids watch



## Sport Cam / Pocket Cam



## Wristband



## Smartphone DDIC

WVGA 800x480 (Q4 15 MP) - Zero Cap.  
HD720 1280x720 (Q4 17 MP) - Zero Cap.  
FHD 1920x1080 (Q1 19 MP) - Zero Cap.

2017: > 90M

2018: > 130M pcs



## Smart speaker



## M\_POS



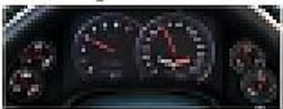
# Automotive Display Driver ICs

< 6 inch displays

7 - 9 inch displays

## Instrument Cluster Display

Analog



No Display

Hybrid (Analog + Digital)



Meters

Full Digital



Virtual  
Cockpit



## Automobile Monitors



Multi-Function CSD



Display Audio



Climate Control



Twin CSDs  
Display Audio  
+  
Navigation



Rearview Mirror Display



Overhead Monitor



Dual Headrest

Segment TN

Character TN

Graphic STN

Mono TFT

Color TFT

a. 新車趨勢 → 顯示器數增多

b. 大尺寸顯示器案增多 → DDI 顆粒數增加 ( Source & Gate 分離 )



# Industrial Display Driver ICs

- Industrial Display Driver IC
- Multimedia Display Driver IC
- New product: **Ultra low power DDI**
- New applications:
  - Portable medical devices / Healthcare products
  - Wearable products / Sports devices / E\_Tag

TN / STN / mono TFT / color TFT



## Applications : IoT / IA / OA / E-payment ...

- Ultra low power DDI for ESL market
- > 4 inch applications transfer to new color TFT DDI

# Light Sensor

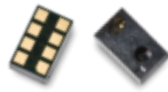
## Ambient Light Sensors

環境光感測器 → 調節螢幕亮度



## Proximity Sensors

近接感測器 → 關屏(防誤觸)



## Light sensor shipment

2017: >200M

2018: >340M

## Smartphone application

- a. AMOLED display → 屏下距離感測方案
- b. LTPS TFT display → 狹縫距離感測方案

近年手機螢幕的變化：

16:9  
screen



Bezel-less  
screen



# ALS / PS

## ● 水滴屏

狹縫 ALS/PS

狹縫 PS / 屏下 ALS

前攝旁 ALS/PS



## ● 全面屏

屏下 ALS/PS

狹縫 PS / 屏下 ALS



# MEMS Sensor

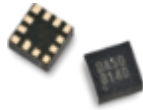
## G sensor shipment

2017: >25M

2018: >30M

## Accelerometers

加速度感測器 → 屏幕旋轉偵測



- ✓ G-sensor for Smartphone market
- ✓ Low power G-sensor for wearable & IoT devices

Mobile phone : 屏幕旋轉

遊戲

手勢偵測

接聽輔助



IoT device : 跌倒偵測

運動偵測

睡眠偵測

抬手亮屏





# PS + ALS + GS + Algorithm → IoT applications

距離感測 ( Proximity sensors )

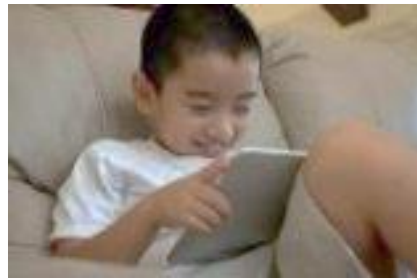
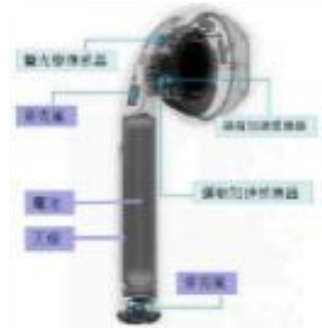
環境光感測 ( Ambient Light Sensors )

RGB色彩感測 ( TV / AMOLED smartphone .. )

手勢感測 ( on / off , 2D / 4D gesture )

靜態/動態心律感測 ( Heart beat detection )

.....



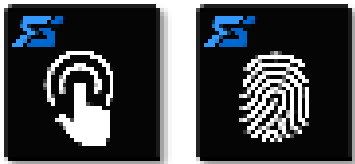
SOC

# Touch Controllers

HFST - 合肥创发微电子

Established - 03/22/2018

Opening - 09/18/2018



Touch controller & FP IC



Industrial



Automotive



Smartphone



FAE 在地化



24\*7 待命小組



技術討論



專案回報機制



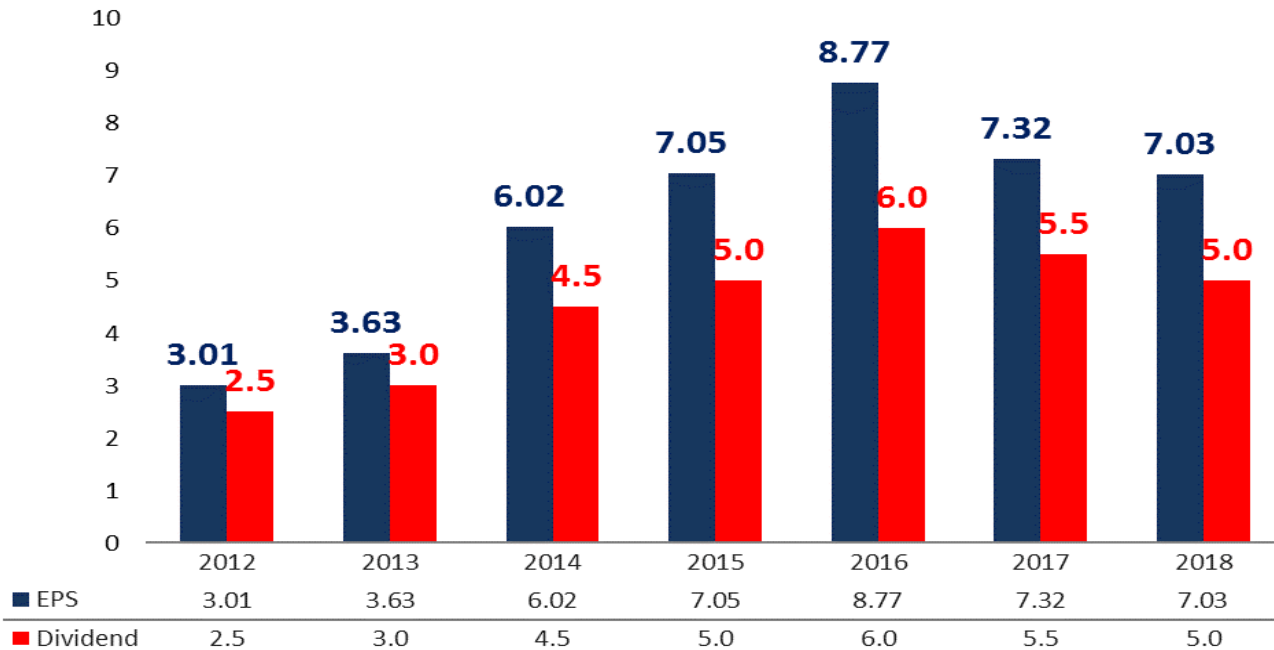
市場訊息 技術交流

# Support IoT related solutions





# EPS & Dividends



Year	Q1		Q2		Q3		Q4		Annual			Q1-Q2
	EPS	GM	EPS	GM	EPS	GM	EPS	GM	EPS	GM	Cash dividend	EPS
2019	1.70	33%	2.80	33%								4.5
2018	1.10	24%	1.82	24%	2.37	33%	1.74	30%	7.03	28%	5.0	
2017	1.38	29%	1.74	26%	2.08	26%	2.12	25%	7.32	27%	5.5	
2016	1.97	30%	1.87	27%	2.52	27%	2.41	28%	8.77	28%	6.0	
2015	1.65	29%	1.33	25%	1.97	26%	2.10	27%	7.05	27%	5.0	



## Strategic Marketing Director

Jacky Chou 周德雲

Tel: +886-2-2659 1276 ext 2206

E-mail: jacky\_chou@sitronix.com.tw

## Investor Relations Officer

Vivian Mao 毛廷方

Tel: +886-2-2659 1276 ext 2395

E-mail: vivian\_mao@sitronix.com.tw

Website: <http://www.sitronix.com.tw>

Taipei office:

6F., No. 608, Ruiguang Rd., Neihu Dist., Taipei City 114, Taiwan

台北市內湖區瑞光路608號6樓

# Thank you



*Lighting up your life.*

**Sitronix**

# Consolidated Income Statement

Item	Q2 19		Q1 19		2018		Q4 18		Q3 18		Q2 18		Q1 18	
	Results	% of sales	Results	% of sales	Results	% of sales	Results	% of sales	Results	% of sales	Results	% of sales	Results	% of sales
Net Sales	3,507,731	-	2,561,593	-	10,330,505	-	2,827,130	-	2,746,000	-	2,682,651	-	2,074,724	-
Gross Profit	1,145,255	33%	836,742	33%	2,870,026	28%	841,542	30%	888,681	33%	644,536	24%	495,267	24%
Operating Expense	575,125	17%	522,355	21%	1,827,512	18%	540,071	19%	513,919	19%	419,292	15%	354,230	17%
Operating Income	570,130	16%	314,387	12%	1,042,514	10%	301,471	11%	374,762	14%	225,244	9%	141,037	7%
Income before Tax	600,897	17%	338,677	13%	1,121,930	11%	312,329	11%	415,729	15%	257,251	10%	136,621	7%
Net Income*	334,950	9%	203,393	8%	840,363	8%	208,169	7%	283,177	10%	218,207	8%	130,810	6%
EPS	2.80	-	1.70	-	7.03	-	1.73	-	2.37	-	1.83	-	1.10	-

\* Listed on the English translation of our financial statements as "Profit (loss), attributable to owners of parent"

Unit: NT\$ thousands (except EPS)  
Accounting standard: IFRS

# Consolidated Balance Sheet

Item	2019/6/30	2019/3/31	2018/12/31	2018/9/30	2018/6/30
Total Assets	9,574,510	8,179,523	8,366,511	8,067,564	8,033,661
Current Assets	7,469,564	6,090,712	6,415,599	5,898,420	5,944,339
Cash & Equivalents	2,421,768	1,991,012	2,060,229	1,993,785	2,405,012
AR	1,544,322	1,262,449	1,359,114	1,337,906	1,282,062
Inventory	1,832,545	1,797,371	2,071,021	1,847,433	1,383,334
Total Liability	3,970,689	2,580,779	3,160,839	2,952,456	3,336,640
AP	1,741,286	1,060,942	1,560,675	1,705,977	1,451,449
Shareholder Eqt.	5,603,821	5,598,744	5,205,672	5,115,108	4,697,021

Unit: NT\$ thousands  
Accounting standard: IFRS